

PGL2000

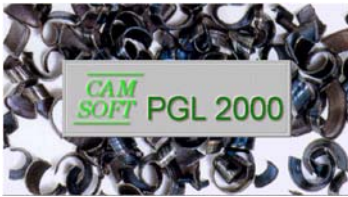
Automatic programming language for machining center



**CAM
SOFT**

Computer Aided Manufacturing Software

Friendly User Interface

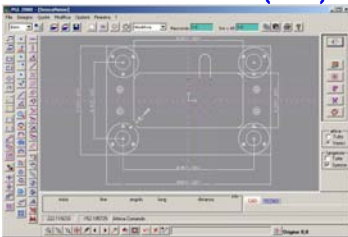


PGL2000 is an application software producing powerful advanced functionality for automatic programming and simulation system for Numerical Control Machines.

PGL2000 is **WINDOWS™** native and joins to the high performances the friendly use of Dialog Box and Icons.

The interpretation of more common **CAD** formats like **MI, DXF, IGES 2D** enables the quick bridge from the mechanical drawing to the **CNC** File for machining.

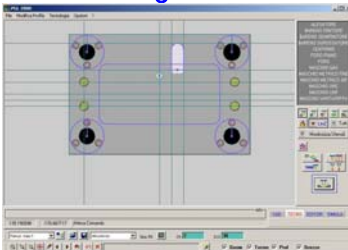
Geometrical Window (CAD)



The geometric window displays the loaded files and enables the commands to modify and optimize the drawing, the geometric window is also enabled to define further independent geometry from the **CAD** :

- ◇ INTRODUCTION OF NEW GEOMETRY (IE : **FILLETS , POINTS, SEGMENTS , ARCS** AND SO ON; DEFINITION OF NEW PROFILES NOT ACQUIRED FROM **CAD**).
- ◇ POSITIONING OF THE ZERO WORKING (ALSO FOR DIFFERENT PARTS SIMULTANEOUSLY LOADED).
- ◇ CLEARING OF UNNECESSARY GEOMETRY AND MANAGEMENT OF THE ACTIVE COLOURS.
- ◇ REPETITIONS WITH POSITIONING AND ROTATION.
- ◇ CORRECTION OF TANGENCY PROBLEMS USING THE COMMANDS **TRIM, CUT, EXTEND**.
- ◇ IMMEDIATE AUTOMATIC GENERATION OR RECOGNITION OF CANONICS PROFILES (**SLOTS, POLYGONS, AND SO ON**).
- ◇ AUTOMATIC RECOGNITION OF HOLES DIAMETER AND POSITION.
- ◇ DANGEROUS SUPERPOSED ELEMENTS CLEARING.
- ◇ DIMENSIONS INSERTION TO COMPLETE THE DRAWING.
- ◇ DISTANCES CHECK TO CONFIRM THE TOOL ACCESS CAPABILITY.
- ◇ MANY OTHER FACILITY TO INCREASE OPERATOR PRODUCTIVITY.

Technological Window



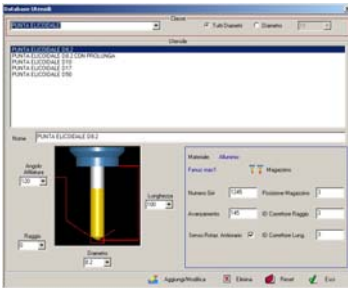
The technological window displays the geometry and enables the application of the technologic strategies.

- ◇ THREE DEFINITION LEVEL OF TECHNOLOGY FOR DRILLING AND MILLING: **MANUAL CONTROL, SIMPLE INSTRUCTIONS CONTROL AND AUTOMATIC CONTROL.**
- ◇ **2D AND 3D** MILLING.
- ◇ MATERIAL SELECTION AND AUTOMATIC ASSIGNMENT OF TECHNOLOGICAL CUTTING PARAMETERS:

FROM PRE-DEFINED TOOL IN DATABASE.
FROM TECHNOLOGICAL TABLE.

- ◇ MACHINE TOOLS CRIB MANAGEMENT.
- ◇ INTERACTIVE VISUALIZATION OF GENERATED **CN** FILE CONCERNING THE CURRENT STATUS OF JOB.
- ◇ SECOND SAFETY LEVEL DEFINITION (OBSTACLE AND BRACKET STEP OVER).
- ◇ **CNC** MACHINES SIMULATION REMOVING MATERIAL FROM STOCK IN TRUE SOLID MODELING.

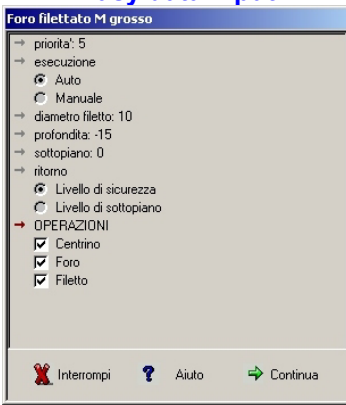
Tools Data Base



Machine Tools Crib

Pos.	Descrizione	Cont.	Cont.	Feed	Speed
1	PISTA A SPINAME D10	1	1		
2	CENTRINO D10	2	2	600	3000
3	PISTA ELICOIDALE D10 L	3	3	140	1200
4	PISTA PER FORI FONDO PIANO D10	4	4	600	1800
5	PISTA ELICOIDALE D10	6	6	800	3000
7	PISTA ELICOIDALE D10	7	7	600	2000
8	CENTRINO D10	8	8	600	3000
15	PISTA ELICOIDALE D10 SENZA PROLLUNGA	15	15	1000	4000

Easy data input



- Technological informations generation by means of specialized tool for milling.
- Pallet management
- Rotating axe management (4th axe) continuous movement or indexed.
- Rotating head (5th axe)

No more complex calculation routines for the operator :

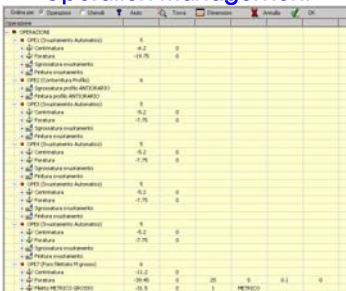
- definition of no-quoted points
- computing of center tool path
- shrink material effects
- secondary level of the workplane management in respect to the Z base.

Minimum request of data in technological macros management; **PGL2000** advise for all automatically computable data:

- Machining allowance for roughing-out.
- Over Z value connected with sharpening angle and thickness get over.
- Increment for every pass in XY plane and Z direction.

Syntax check for inputted data, warning for inconsistent or dangerous situations.

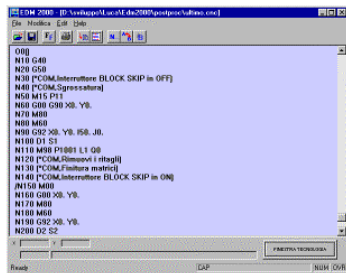
Operation Management



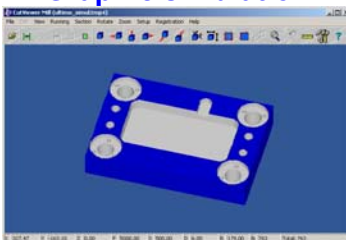
Benefits :

- Simultaneous data INPUT and Check of DATA.
- Management of all executed operations : ordering and mode.
- Complete graphic representation of the job with drastic reduction of errors.
- Quick transition among the Geometry and Technology windows to editing : every modification acts immediatly on the **CNC File**.
- Availability of a specially created Editor for a quick and safe setup of the **CNC File**.
- Set of customized Post-Processors.

File CN editor



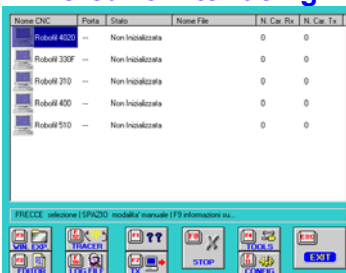
Graphic simulation



PGL2000 is interfaced with **MERCURIO** application for output data management :

- Simultaneous transmission of CNC files on a Serial network of until 32 peripherals.
- Output of all the informations connected to the involved transmission in a report-file.

Mercurio interfacing





CAM SOFT puts at disposal of its Customers its solid experience in the solutions of problems in PCs connection, PC with machining tools connection, managing and multiple transmission of CNC Files to machining tools.



Since 1982 **CAM SOFT** designs and realizes LAN Network and systems engineering, supplementing its products and services with **Hewlett-Packard™** hardware.

Our Company

CAM SOFT has been working to realize technical informatic system since 1982, with the support of Hewlett-Packard hardware and software.

CAM SOFT offers a solid experience in N.C. for the solution of hardware and software problems in the CAD/CAM area.

Organizational and technical advice
System supply
Customized software
Services

Services

A comprehensive range of support services are available both for design (CAD) and manufacturing (CAM).

Technical advice
Customer training
Software update
On-site and phone support
Customized support



Computer Aided Manufacturing Software

CAM SOFT snc di dott. Marco Campironi & C.
Via Piemonte, 3
20064 GORGONZOLA (MI) ITALIA
Tel +39-02 9514748 Fax / Modem +39-02 9517665
e-mail : camsoft@camsoft.it
C.C.I.A.A. Milano n. 1098418 - Part. I.V.A. e C.F. n. 05054550156